



R-55 LOCK
ACOUSTIC

THE NEW FLOORING JOURNEY

Gerflor[®]
theflooringgroup

WELCOME TO A NEW GENERATION OF RIGID LVT!

A Revolutionary Patented Technology:

- The Rigid Composit Board!
- Easy to carry & easy to install

The Best performance for all your renovation projects!



100% Europe

**1 factory
7 logistic hubs**

- Reduced delivery time
- Low carbon footprint

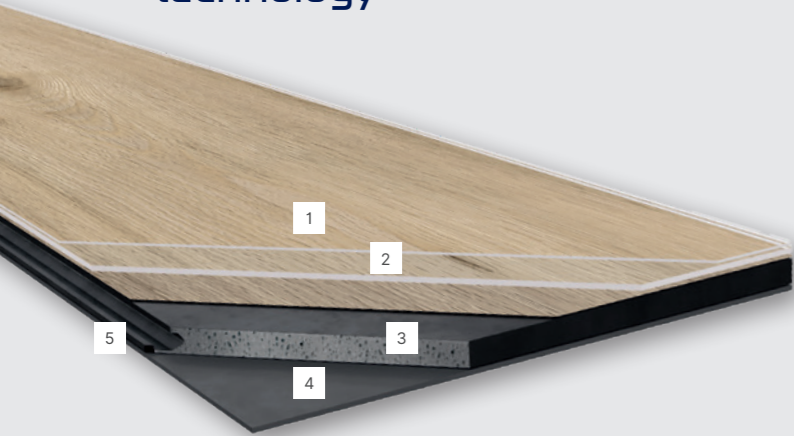
**MADE IN
~~CHINA~~
EUROPE**



R-55 LOCK ACOUSTIC



Full rigid patented technology



- 1. Pur+ Matt
- 2. 4D design
- 3. Full Rigid Patented Technology (RCB)
- 4. Acoustic backing
- 5. Angle to Angle locking system

Makes life easier & better

-  **Easy installation**
easy to handle (7 kg/sqm) & to assemble
-  **Heavy renovation solution**
8 mm joint width
3 mm joint depth
-  **Top robustness and no indentation**
-  **High thermal resistance up to 60°C**
-  **Acoustic insulation 19dB**
-  **Indoor Air Quality TVOC <10 µg/m³ (A+)**

Design led collection

EIR : Emboss In Register



Committed to a sustainable future

-  **Made in Europe**
-  **100% recyclable**
-  **2sqm per pack:
30% more product**



DESCRIPTION

Total thickness	EN ISO 24346	mm	5.7
Wearlayer thickness	EN ISO 24340	mm	0.55
Weight	EN ISO 23997	g/m ²	7000
Size	ISO 24342	mm	229 x 1250
Number of planks & sqm/box/palett	-	-	7 / 2 m ² / 104 m ²

CLASSIFICATION

Product specification	-	-	EN 16511
European classification	EN ISO 10874	class	23/33
Fire rating	EN 13 501-1	class	Bfl-s1
Static electrical propensity	EN 1815	kV	< 2
Slip resistance wet	DIN 51130	class	R10

PERFORMANCES

Wear resistance	EN 660.2	mm ³	< 2.0
Wear group	-	group	T
Type binder content	EN ISO 10582	type	I
Room impact noise	NF S 31074	dB	79
Sound insulation	EN ISO 717-2	dB	19
Dimensional stability	EN ISO 23999	%	≤ 0.15
Residual indentation	EN ISO 24343-1	mm	≤ 0.20
Castor chair test (type W)	ISO 4918	-	OK
Thermal conductivity	EN ISO 10456	W/(m.K)	0.25
Colour fastness	EN 20 105 - B02	degree	≥ 6
Surface treatment	-	-	PUR+ Matt
Chemical products resistance	EN ISO 26987	-	OK

ENVIRONMENT

TVOC rate 28 days	ISO 16000-6	µg/m ³	< 10
-------------------	-------------	-------------------	------

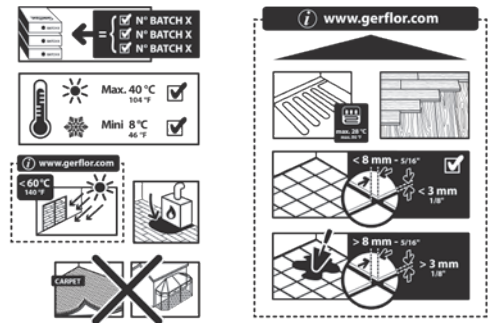
CE MARKING

	EN 14041	   
--	----------	---

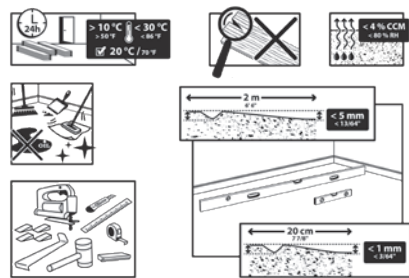
Areas of use:



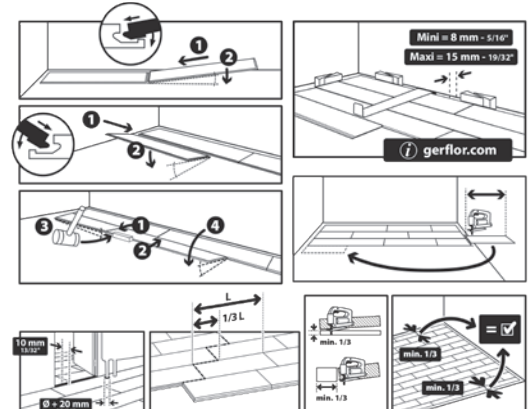
IMPORTANT



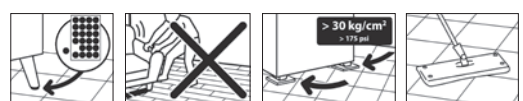
PREPARATION



INSTALLATION



MAINTENANCE



We care / we act Our Commitments for a Sustainable future


CARBON FOOTPRINT*
 -20 % kg
 CO₂ equivalent/m²
 between 2020 and 2025


BIOSOURCED CONTENT**
 10 % by 2025


RECYCLED CONTENT
 30 % by 2025


ADHESIVE FREE***
 35 % by 2025


ANNUAL VOLUME RECYCLED
 60 000 t by 2025

Gerflor[®]

* Scopes 1 and 2 defined in the GHG protocol ** % of activity with biosourced materials *** % of activity - adhesive free solution